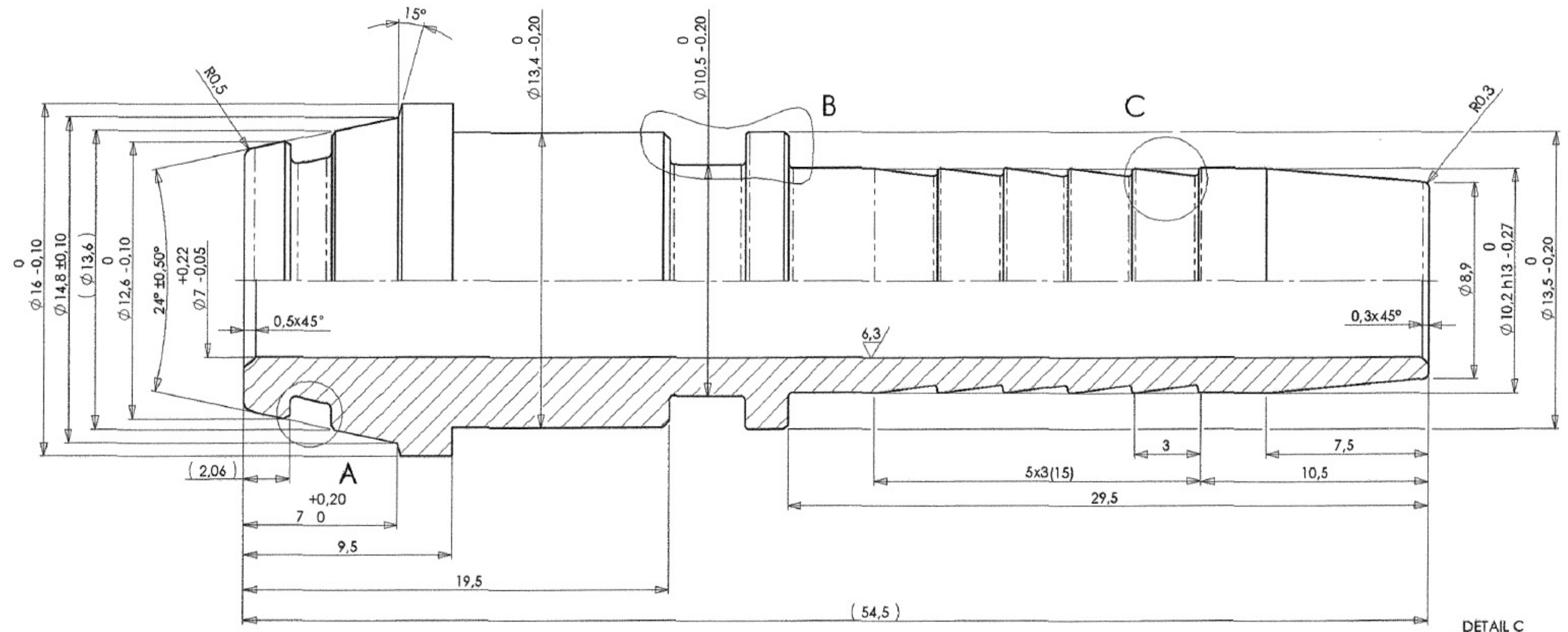
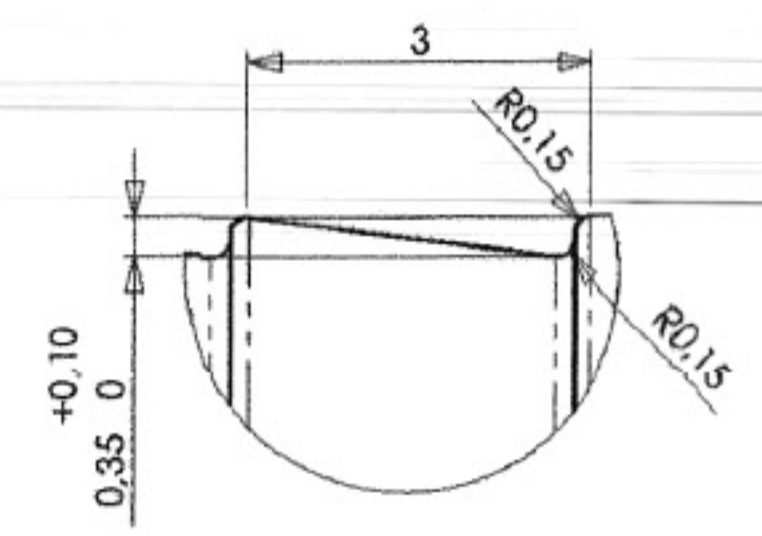


3.2 / (✓)

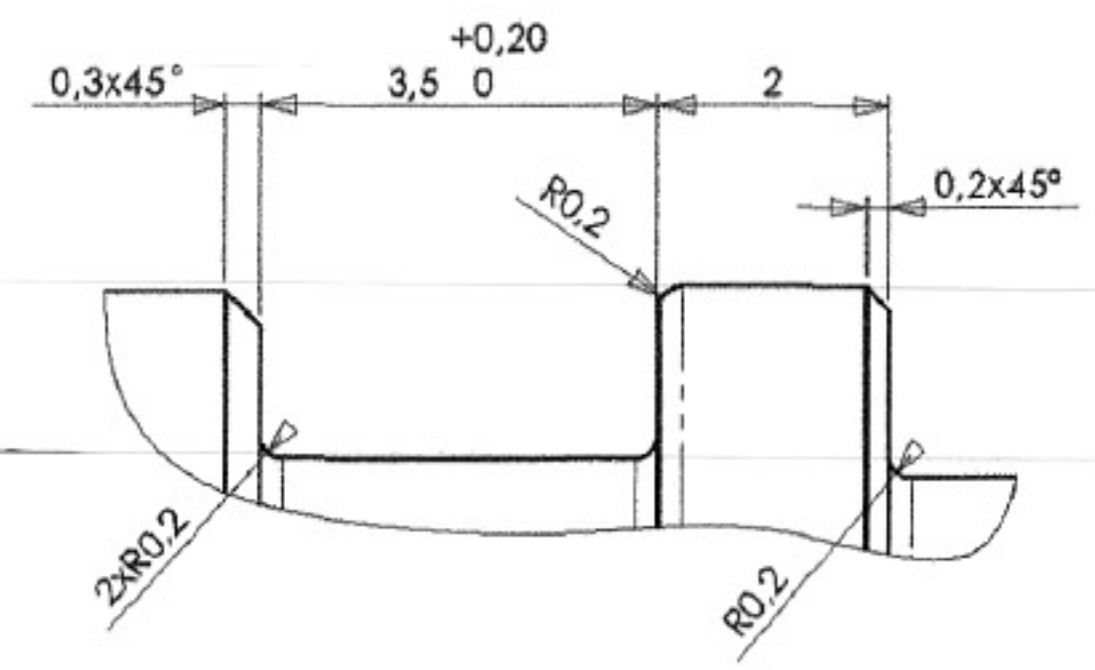


225.000
Price ?

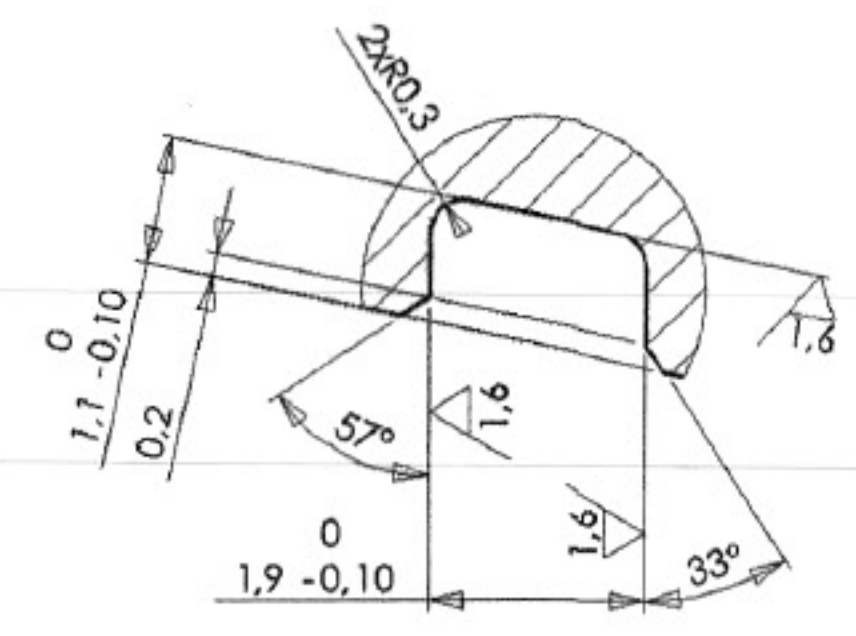
DETAIL C
SCALE 10:1



DETAIL B
SCALE 10:1



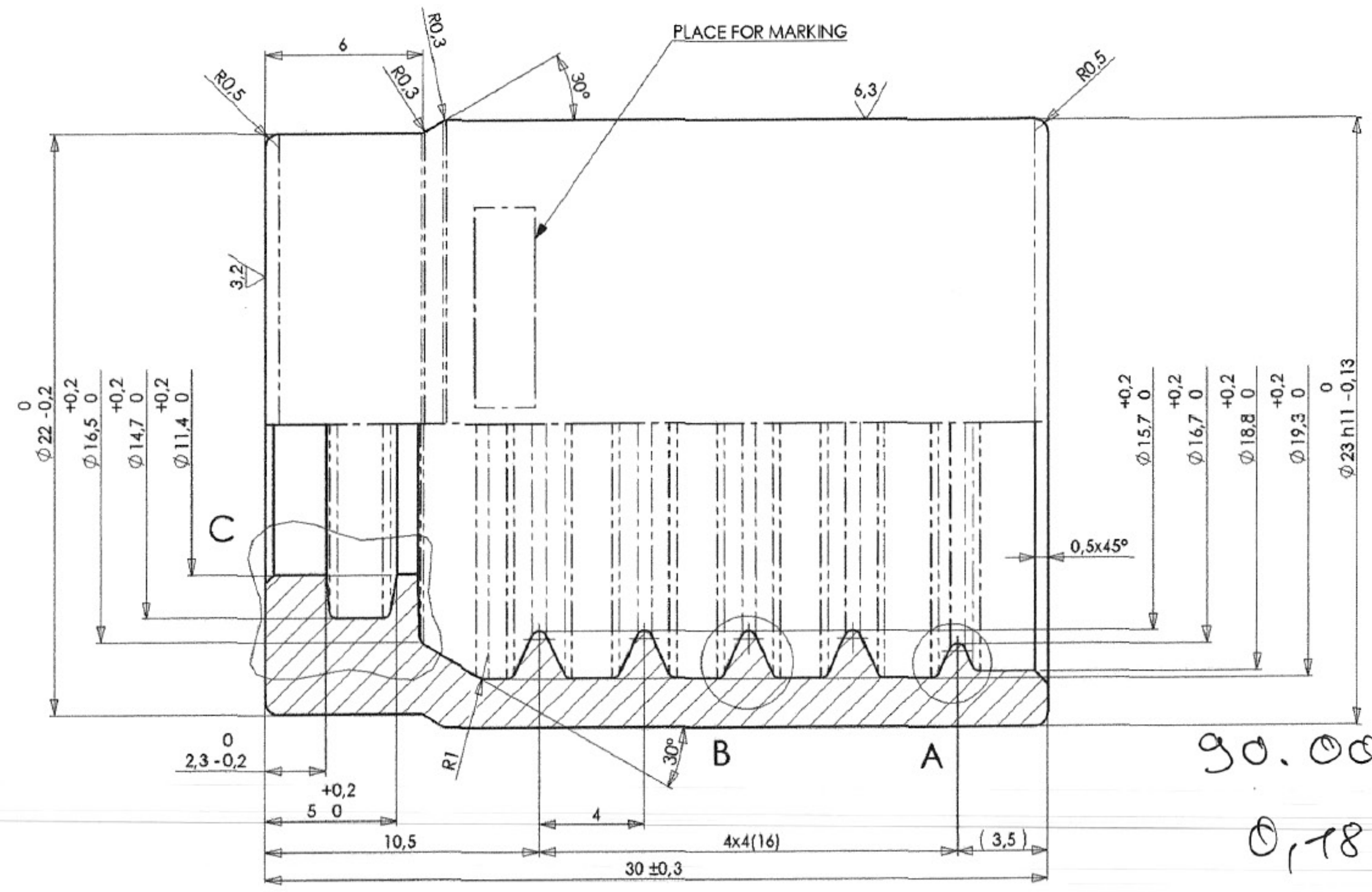
DETAIL A
SCALE 10:1



UNLESS OTHERWISE SPECIFIED: DIMENSIONS ARE IN MILLIMETERS TOLERANCES: ISO 2768-mS ALL DIMENSIONS AND TOLERANCES ARE INCL. FINISH DEBUR AND BREAK SHARP EDGES		
NAME	SIGNATURE	DATE
DRAWN Miroslav Skuta		8.11.2005
CHK'D		
APP'VD		
MIG		
Q.A.		
REVISION		

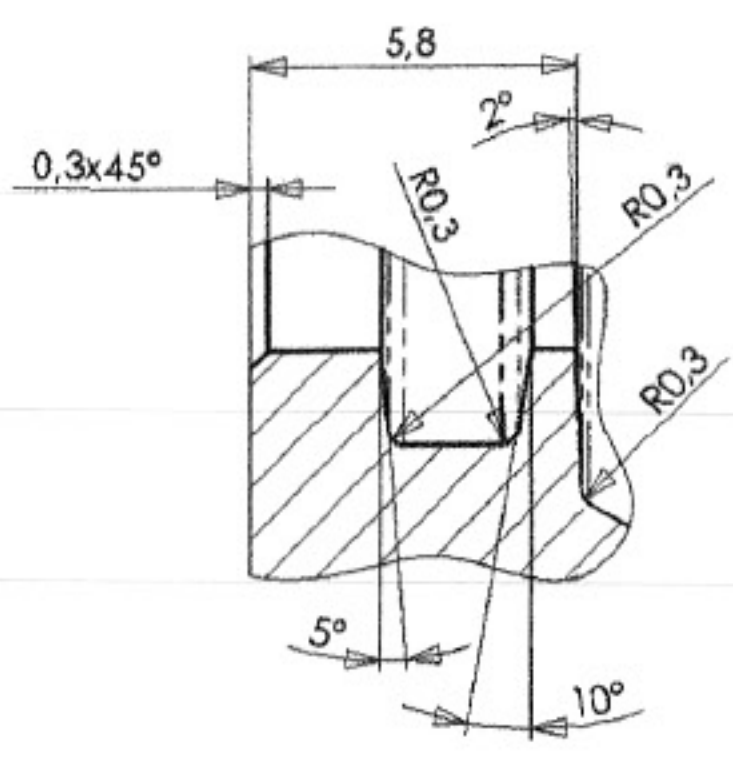
Teilenr. PN 10 AOL pug

FR
HE
M
ST
NE
TF
R
C
O
All rights reserved.

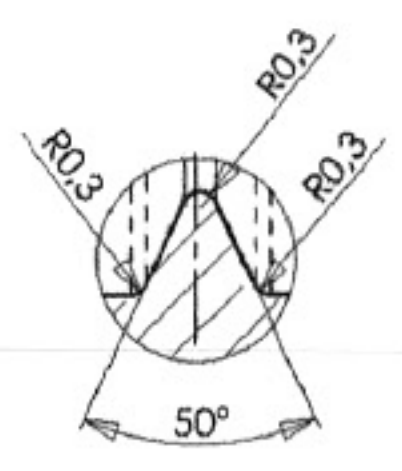


90.000
0,18 Eur

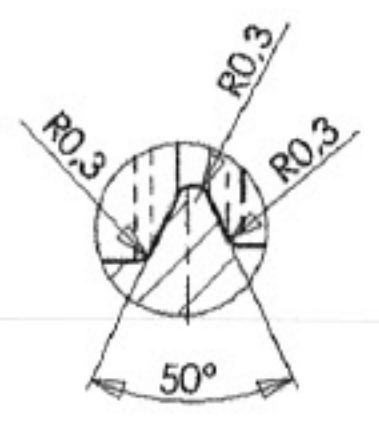
DETAIL C



DETAIL B



DETAIL A



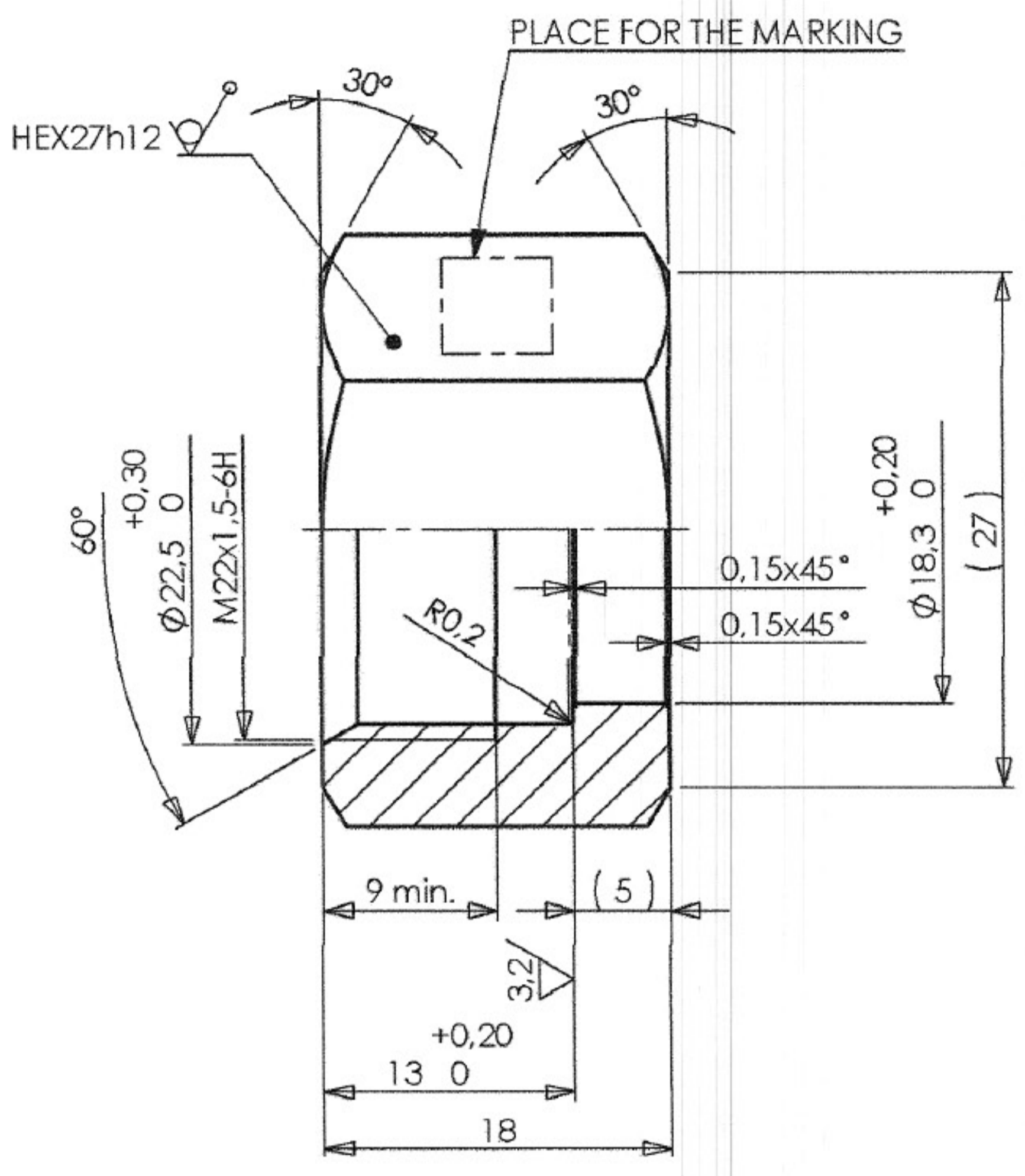
1. THIS PRODUCT HAS TO BE MARKED BY MANUFACTURER'S CODE AND PRODUCT NAME
MINIMUM LETTER HEIGHT 3mm, MAXIMUM LETTER HEIGHT 5mm.
2. ANNEAL BEFORE SURFACE PROTECTED.
ANNEALING SPECIFICATION: ANNEALING BY 850 TO 950 °C, 15 MIN. HOLD, SLOW COOLING DOWN.
VOR DER OBERFLÄCHENBEHANDLUNG BEI 850 BIS 950 °C 15 MIN. GLÜHEN; LANGSAM ABKÜHLEN LASSEN.
3. SURFACE PROTECTION ACCORDING ORDER SPECIFICATIONS. CHECK ORDER BEFORE PRODUCTION.
OBERFLÄCHENSCHUTZ WIE IN BESTELLUNG BEAUFTRAGT. VOR PRODUKTIONSSTART BESTELTEXT PRÜFEN.

UNLESS OTHERWISE SPECIFIED:
DIMENSIONS ARE IN MILLIMETERS
TOLERANCES: ISO 2768-mK
ALL DIMENSIONS AND TOLERANCES
ARE IN CL. FINISH
DEBUR AND BREAK SHARP EDGES

	NAME	DATE
DRAWN	Miroslav Skuta	25.2.2008
CHECKED	Ing. Pavol Durac	25.2.2008
APPROVED	Anke Baacke	25.2.2008

DWG.No
PHN 206

6,3 (✓)

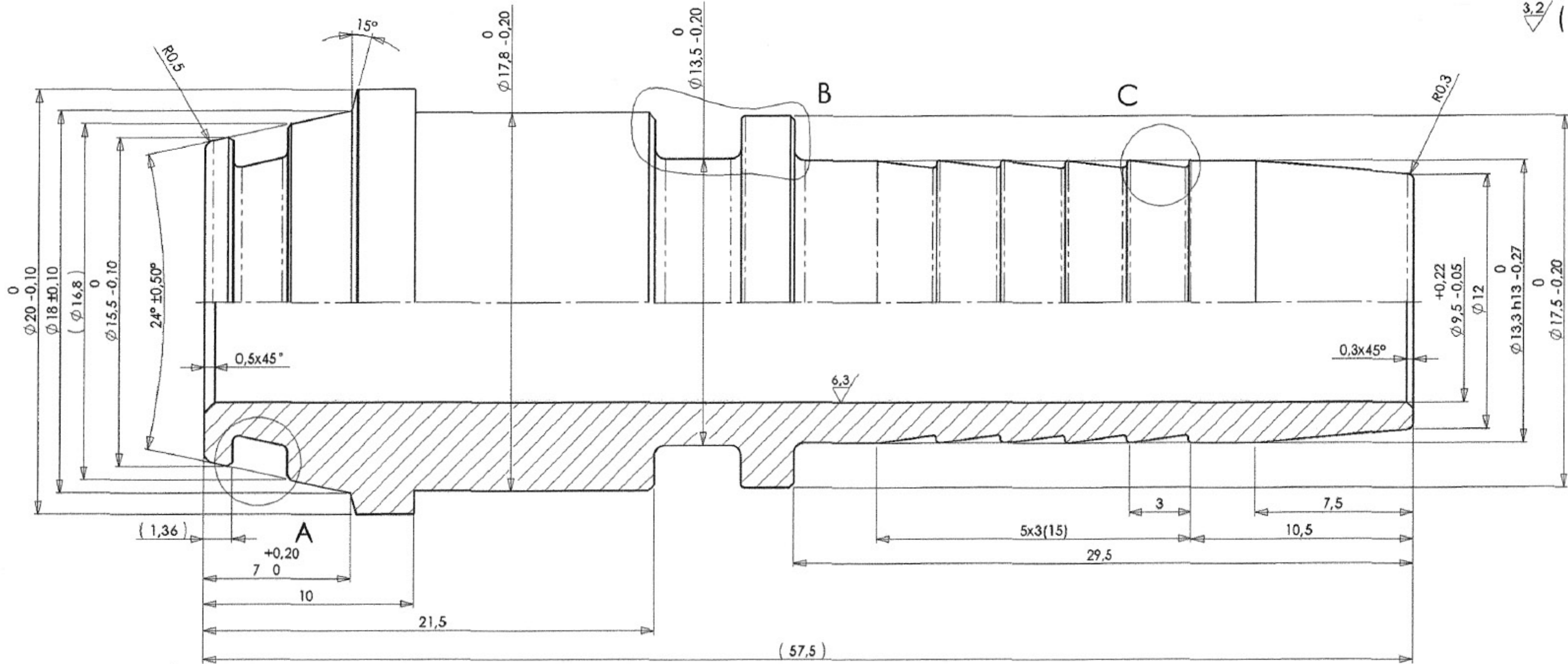


150.000
Price ??

1. THIS PRODUCT HAS TO BE MARKED BY MANUFACTURER'S CODE.
MINIMUM LETTER HEIGHT 3,5mm, MAXIMUM LETTER HEIGHT 5mm.

	UNLESS OTHERWISE SPECIFIED: DIMENSIONS ARE IN MILLIMETERS TOLERANCES: ISO 2768-mK ALL DIMENSIONS AND TOLERANCES ARE INCL. FINISH DEBUR AND BREAK SHARP EDGES			FINISH: FeZn8C2C ISO 2081
				HEAT TREATING: -
DRAWN Miroslav Škuta	SIGNATURE	DATE 7.11.2005	MATERIAL: 11SMnPb30+C 1.0718+C	
CHK'D APPVD				STOCK:
MFG Q.A				NETTO WEIGHT: 0.044 kg
REVISION				This drawing is a property of HANSA-FLEX Hydraulik, GmbH. This drawing may contain confidential and trade secret information and is given to the receiver in confidence. All rights reserved.

DWG.No
MUF-L M22x1,5 S18,3



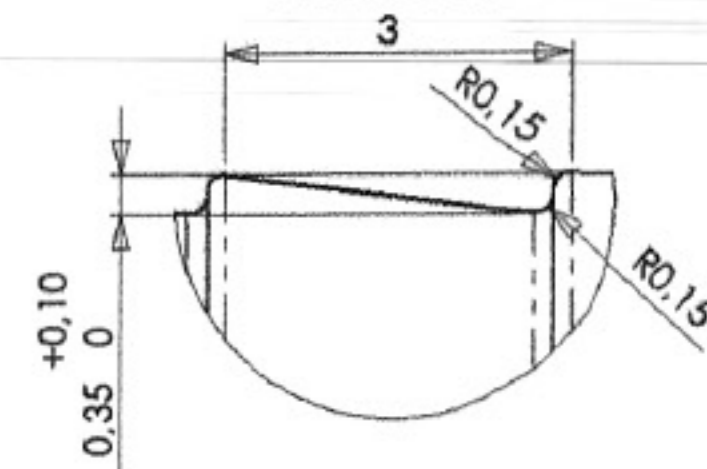
3.2 (✓)

150.000

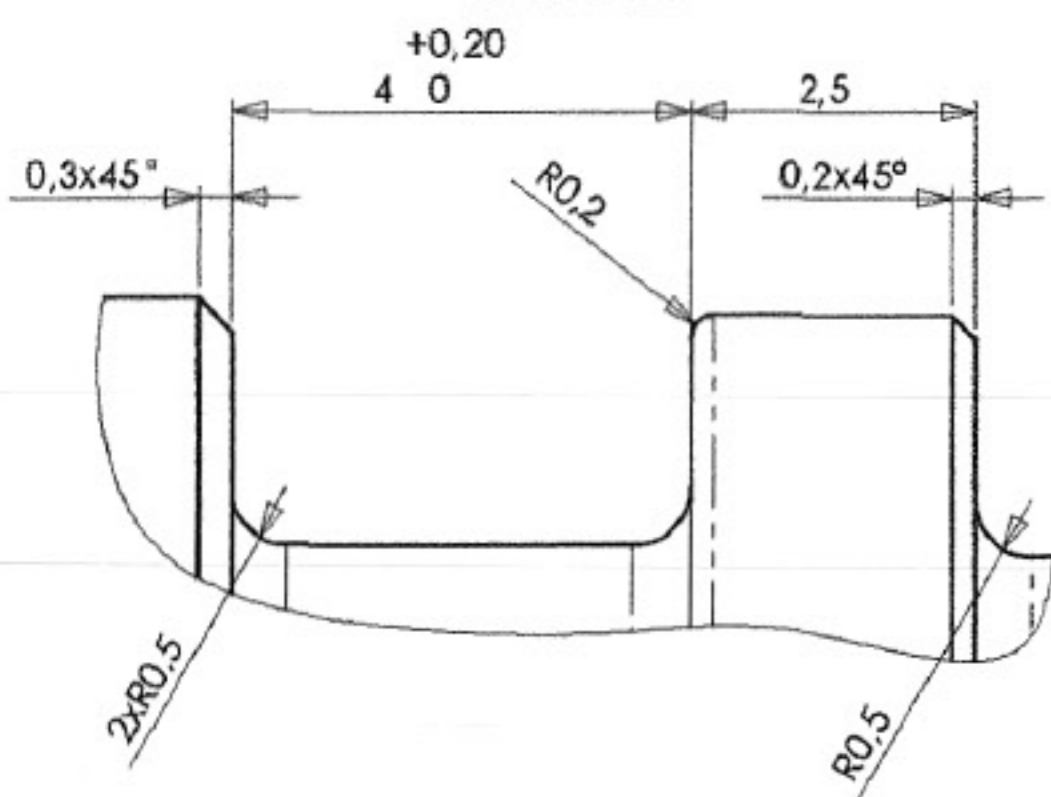
0,38 Ear

Finish → Zn/plated

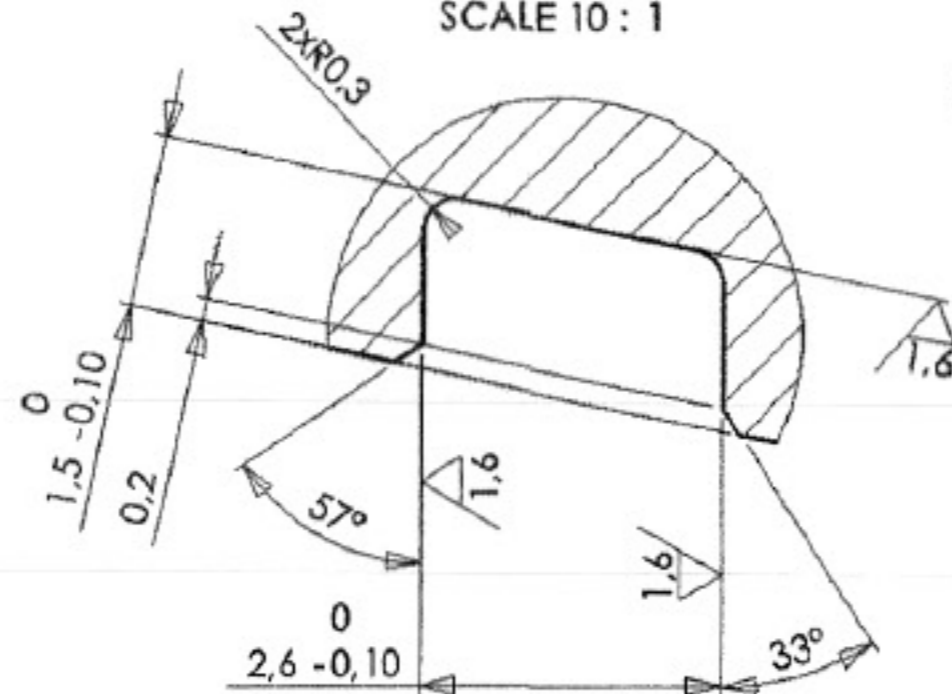
DETAIL C
SCALE 10:1



DETAIL B
SCALE 10:1



DETAIL A
SCALE 10:1

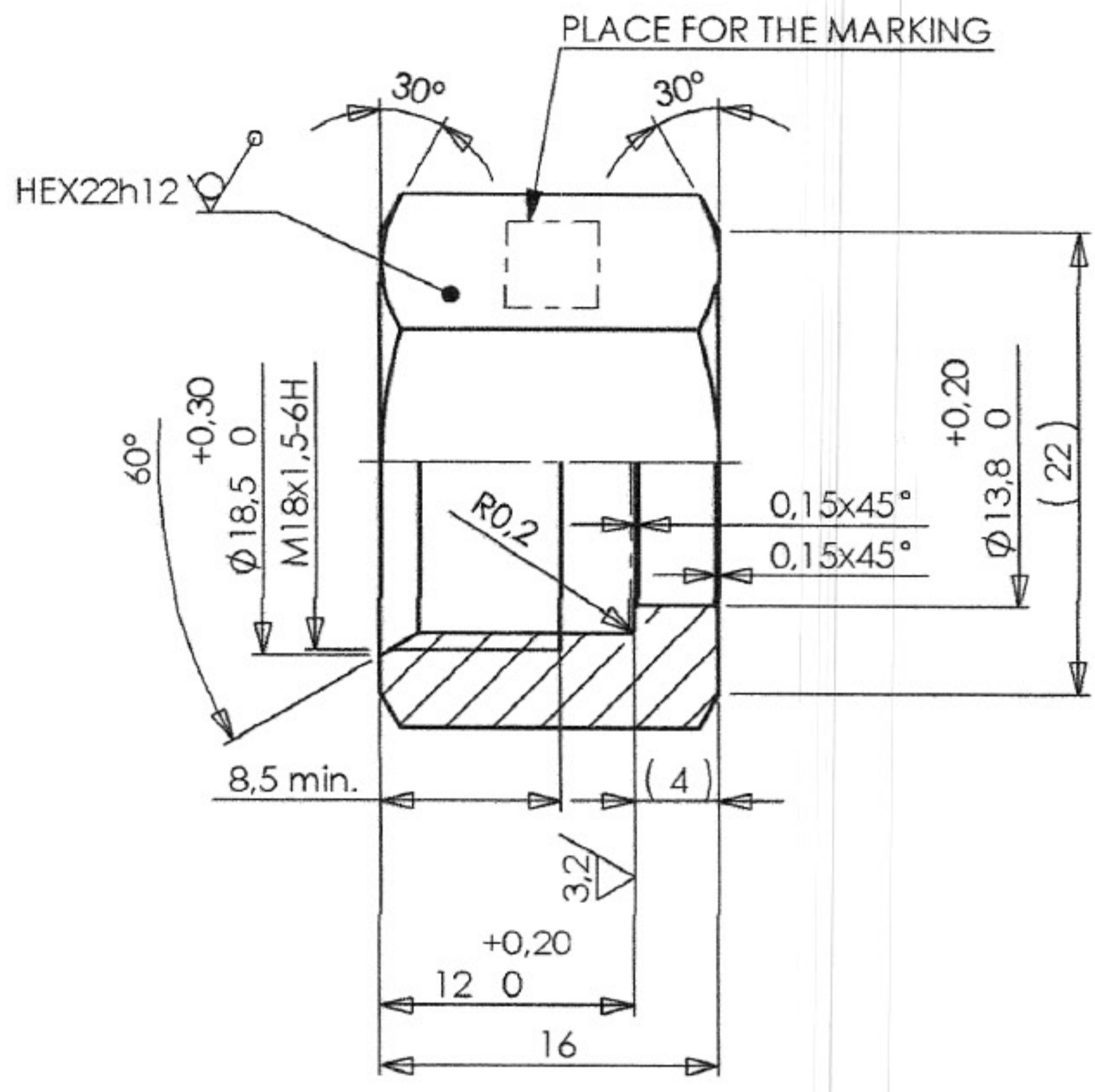


UNLESS OTHERWISE SPECIFIED:
DIMENSIONS ARE IN MILLIMETERS
TOLERANCES: ISO 2768-mK
ALL DIMENSIONS AND TOLERANCES
ARE INCL FINISH
DEBUR AND BREAK SHARP EDGES

	NAME	SIGNATURE	DATE
DRAWN	Miroslav Skuta		8.11.20
CHK'D			
APP'VD			
MFG			
QA			
REVISION			

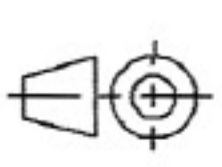
DWG.No
PN13 AOL pug

6,3/ (✓)



225.000
Price ???

1. THIS PRODUCT HAS TO BE MARKED BY MANUFACTURER'S CODE.
MINIMUM LETTER HEIGHT 3,5mm, MAXIMUM LETTER HEIGHT 5mm.



UNLESS OTHERWISE SPECIFIED:
DIMENSIONS ARE IN MILLIMETERS
TOLERANCES: ISO 2768-mK
ALL DIMENSIONS AND TOLERANCES
ARE INCL. FINISH
DEBUR AND BREAK SHARP EDGES

FINISH:
FeZn8C2C ISO 2081

HEAT TREATING:
-

	NAME	SIGNATURE	DATE
DRAWN	Miroslav Škuta		7.11.2005
CHK'D			
APPV'D			
MFG			
QA			
REVISION			

MATERIAL:
11SMnPb30+C 1.0718+C

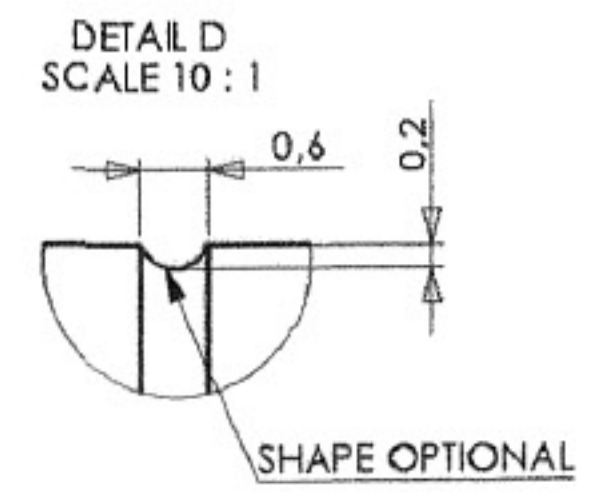
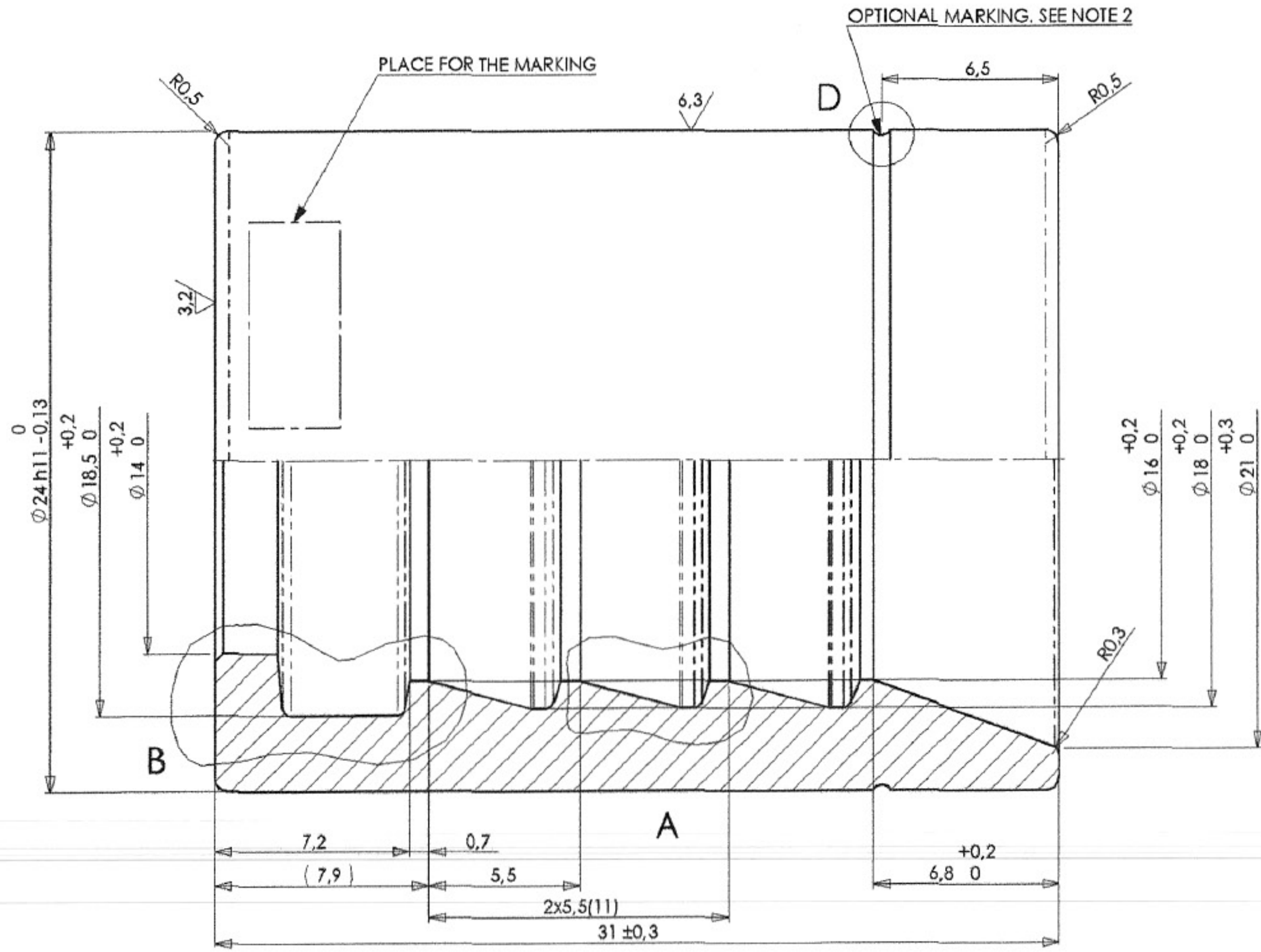
STOCK:

NETTO WEIGHT:
0.027 kg

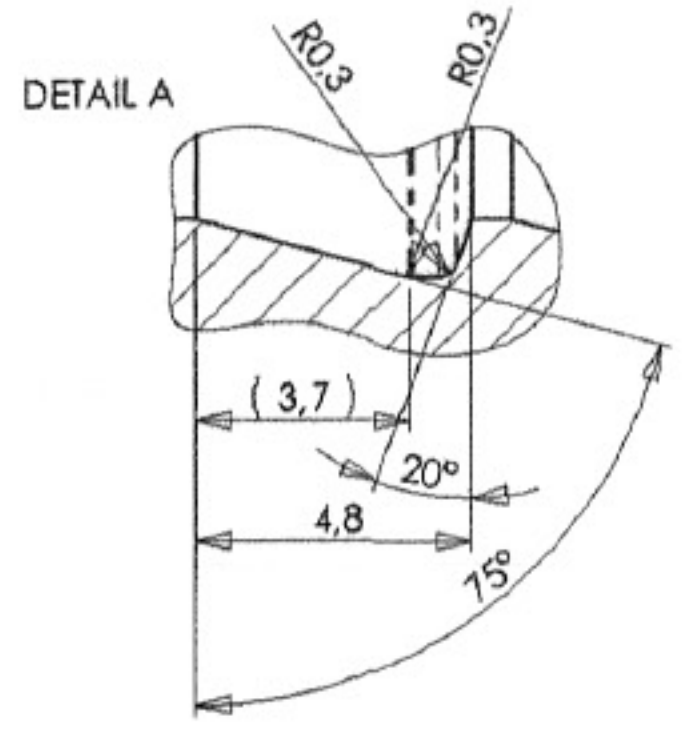
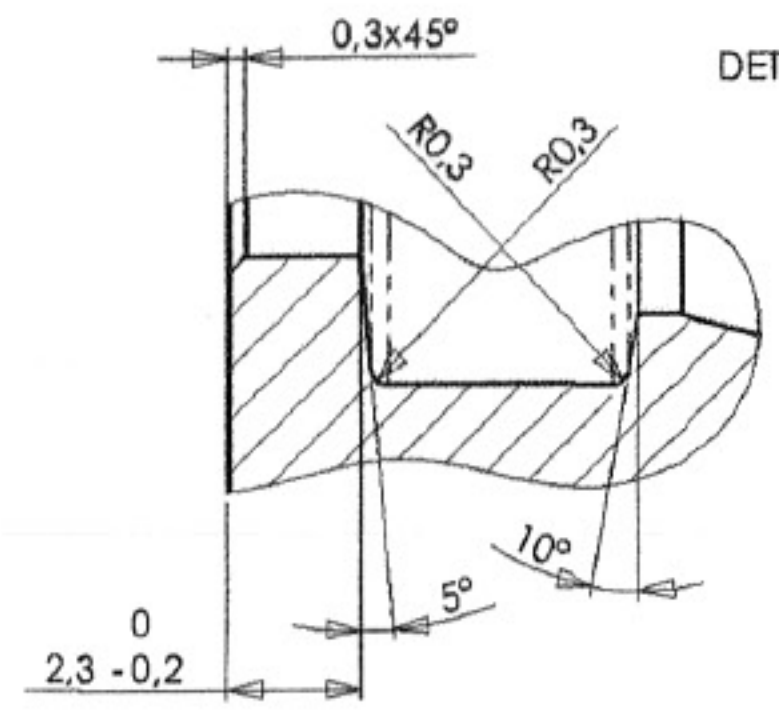
This drawing is a property of HANSA-FLEX
Hydraulik GmbH. This drawing may contain
confidential and trade secret information
and is given to the receiver in confidence.
All rights reserved.

DWG.No
MUF-L M18x1,5 S13,8

6.3 (✓)



725.000
Price 0,27 Eur

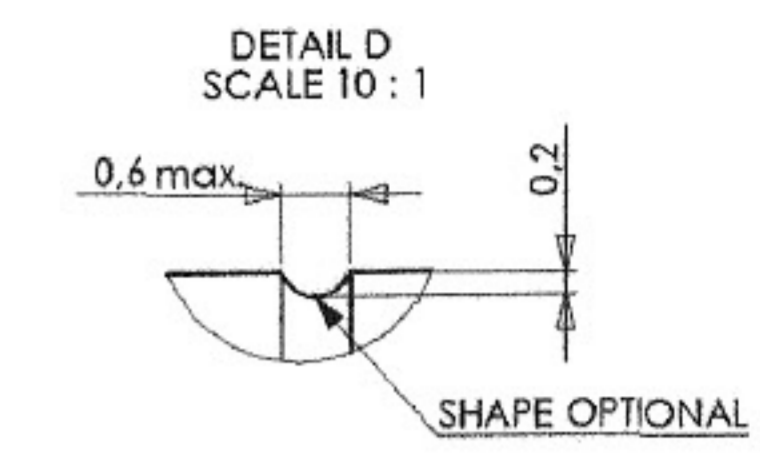
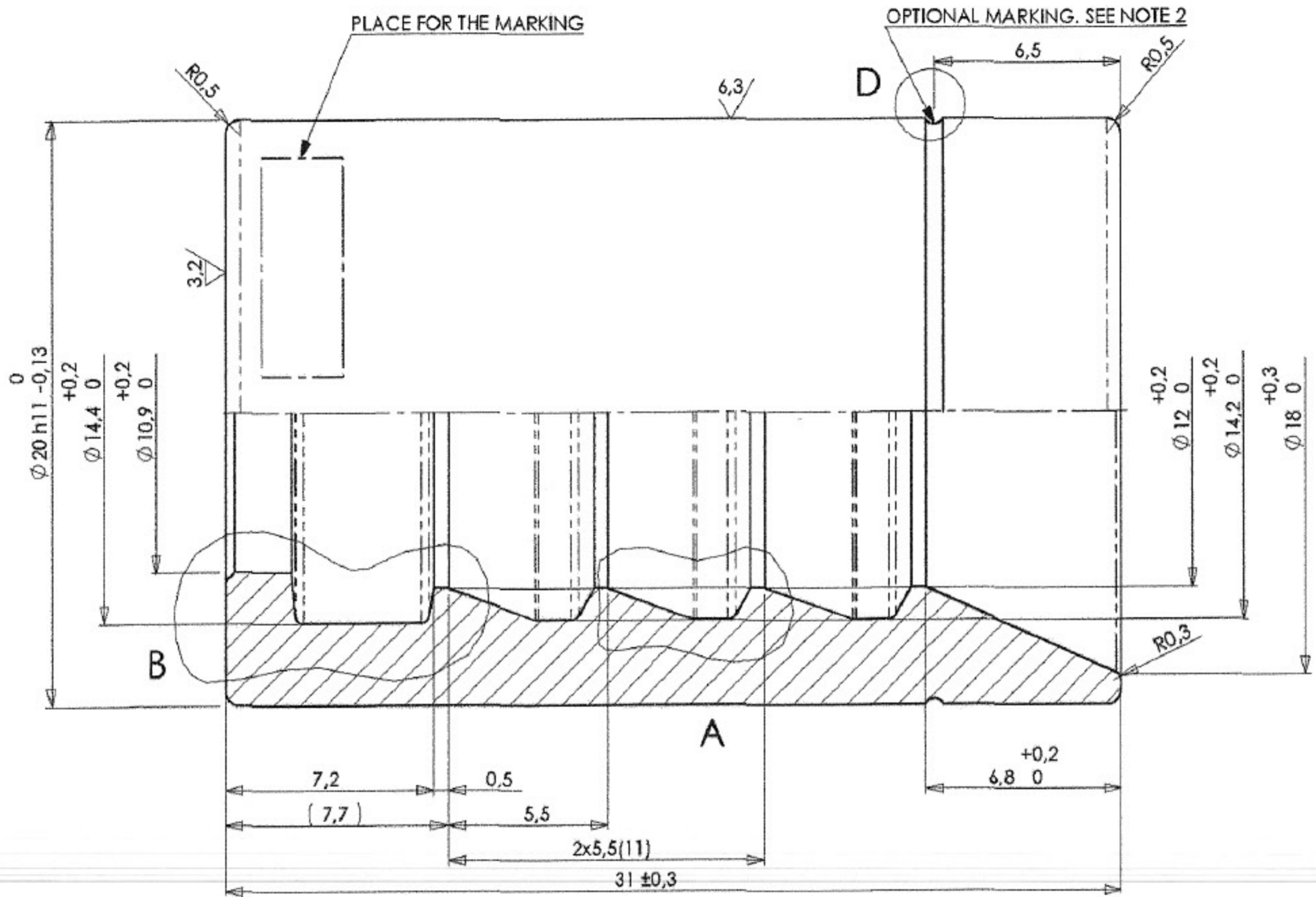


1. THIS PRODUCT HAS TO BE MARKED BY MANUFACTURER'S CODE AND PRODUCT NAME
MINIMUM LETTER HEIGHT 3mm, MAXIMUM LETTER HEIGHT 5mm.
2. ONLY USE THIS MARKING IF NOT POSSIBLE TO APPLY PRODUCT NAME MARKING ACCORDING NOTE 1.
3. ANNEAL BEFORE SURFACE PROTECTED.
ANNEALING SPECIFICATION: ANNEALING BY 850 TO 950 °C, 15 MIN. HOLD, SLOW COOLING DOWN.
VOR DER OBERFLÄCHENBEHANDLUNG BEI 850 BIS 950 °C 15 MIN. GLÜHEN; LANGSAM ABKÜHLEN LASSEN.
4. SURFACE PROTECTION ACCORDING ORDER SPECIFICATIONS. CHECK ORDER BEFORE PRODUCTION.
OBERFLÄCHENSCHUTZ WIE IN BESTELLUNG BEAUFTRAGT. VOR PRODUKTIONSTART BESTELLTXT PRÜFEN.

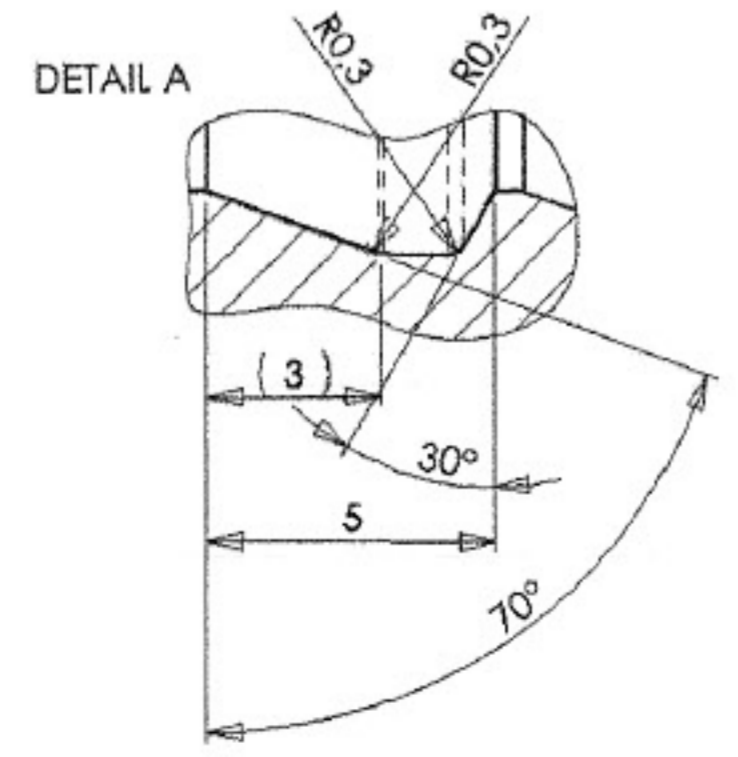
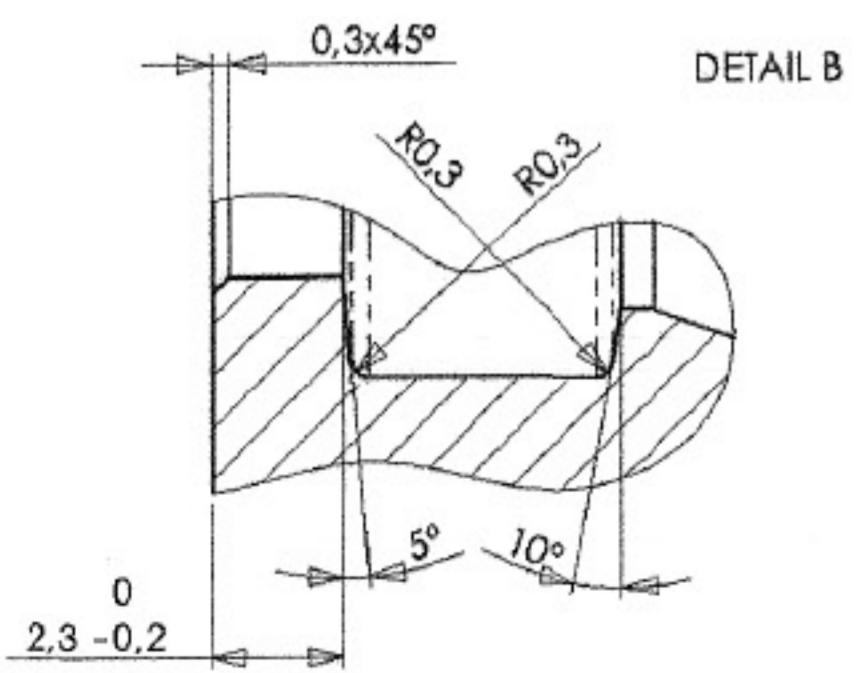
UNLESS OTHERWISE SPECIFIED: DIMENSIONS ARE IN MILLIMETERS TOLERANCES: ISO 2718-mK ALL DIMENSIONS AND TOLERANCES ARE INCL. FINISH DEBUR AND BREAK SHARP EDGES		FW
		HE
		MI
DRAWN	Miroslav Skuta	22.8.2008
CHECKED	Ing. Pavol Durec	22.8.2008
APPROVED	Anke Baacke	22.8.2008
		ST
		NI

DWG.No
PHD 110

6.3 (✓)



100.000
Price 0,177 Euro

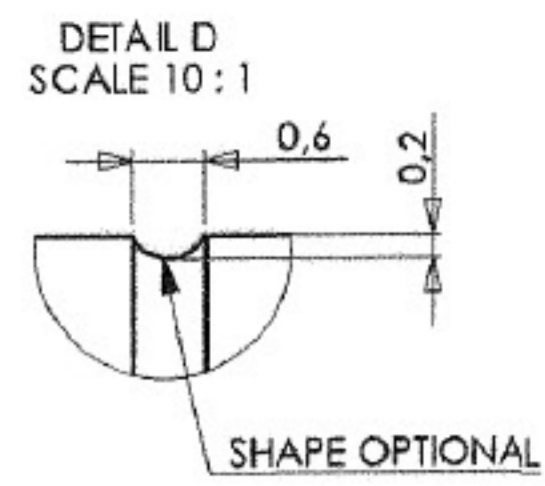
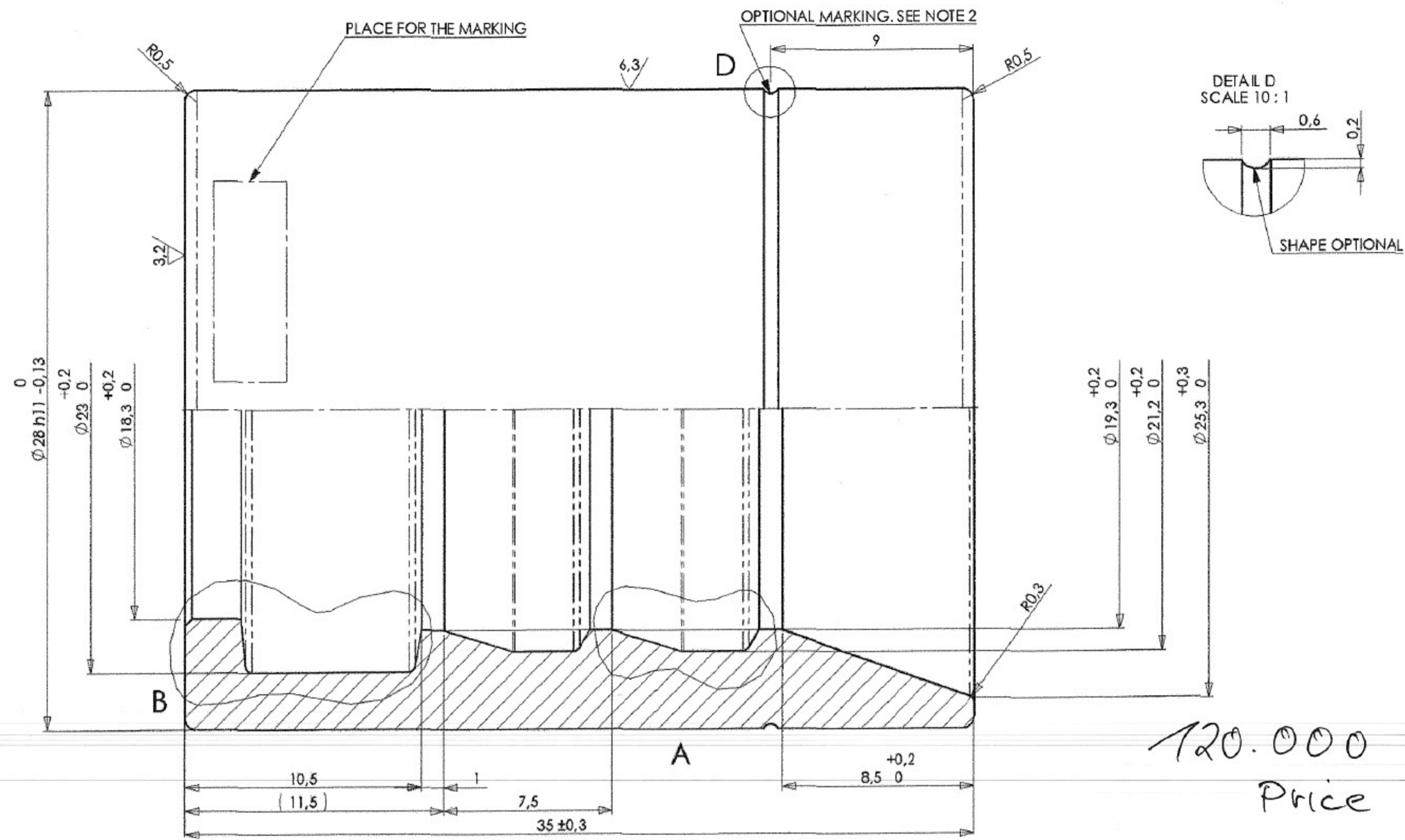


1. THIS PRODUCT HAS TO BE MARKED BY MANUFACTURER'S CODE AND PRODUCT NAME
MINIMUM LETTER HEIGHT 3mm, MAXIMUM LETTER HEIGHT 5mm.
2. ONLY USE THIS MARKING IF NOT POSSIBLE TO APPLY PRODUCT NAME MARKING ACCORDING NOTE 1.
3. ANNEAL BEFORE SURFACE PROTECTED.
ANNEALING SPECIFICATION: ANNEALING BY 850 TO 950 °C, 15 MIN. HOLD, SLOW COOLING DOWN.
VOR DER OBERFLÄCHENBEHANDLUNG BEI 850 BIS 950 °C 15 MIN. GLÜHEN; LANGSAM ABKÜHLEN LASSEN.
4. SURFACE PROTECTION ACCORDING ORDER SPECIFICATIONS. CHECK ORDER BEFORE PRODUCTION.
OBERFLÄCHENSCHUTZ WIE IN BESTELLUNG BEAUFTRAGT. VOR PRODUKTIONSSTART BESTELLTEXT PRÜFEN.

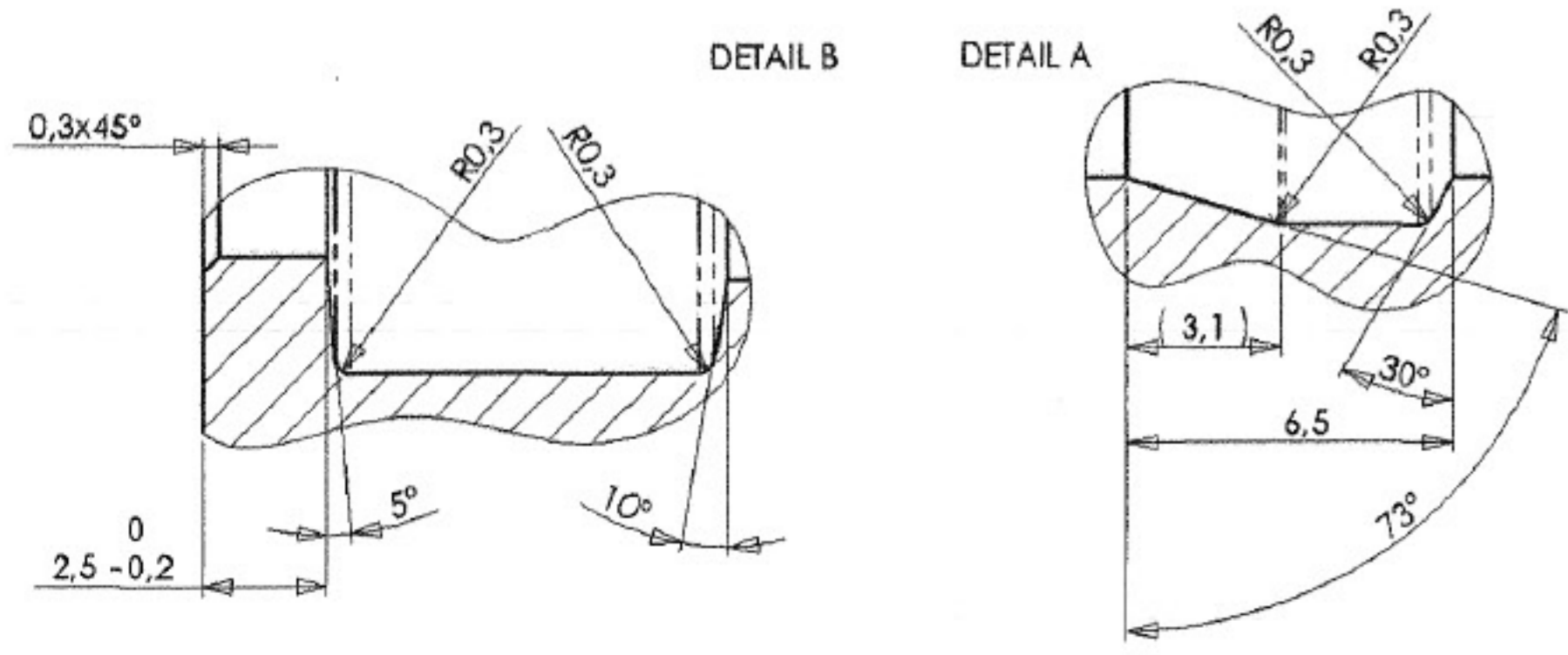
UNLESS OTHERWISE SPECIFIED: DIMENSIONS ARE IN MILLIMETERS TOLERANCES: ISO 2768-mK ALL DIMENSIONS AND TOLERANCES ARE INCL. FINISH DEBUR AND BREAK SHARP EDGES		
	NAME	DATE
DRAWN	Miroslav Skuta	22.8.2008
CHECKED	Ing. Pavol Durac	22.8.2008
APPROVED	Anke Baacke	22.8.2008

DWG.No
PHD 106

6.3/ (✓)



120.000
Price 0,29 Eur



1. THIS PRODUCT HAS TO BE MARKED BY MANUFACTURER'S CODE AND PRODUCT NAME. MINIMUM LETTER HEIGHT 3mm, MAXIMUM LETTER HEIGHT 5mm.
 2. ONLY USE THIS MARKING IF NOT POSSIBLE TO APPLY PRODUCT NAME MARKING ACCORDING NOTE 1.
 3. ANNEAL BEFORE SURFACE PROTECTED.
 4. SURFACE PROTECTION ACCORDING ORDER SPECIFICATIONS. CHECK ORDER BEFORE PRODUCTION.
- ANNEALING SPECIFICATION: ANNEALING BY 850 TO 950 °C, 15 MIN. HOLD, SLOW COOLING DOWN.
 VOR DER OBERFLÄCHENBEHANDLUNG BEI 850 BIS 950 °C 15 MIN. GLÜHEN; LANGSAM ABKÜHLEN LASSEN.
 OBERFLÄCHENSCHUTZ WIE IN BESTELLUNG BEAUFTRAGT. VOR PRODUKTIONSSTART BESTELTEXT PRÜFEN.

UNLESS OTHERWISE SPECIFIED:
 DIMENSIONS ARE IN MILLIMETERS
 TOLERANCES: ISO 2745-mK
 ALL DIMENSIONS AND TOLERANCES
 ARE INCL. FINISH
 DEBUR AND BREAK SHARP EDGES

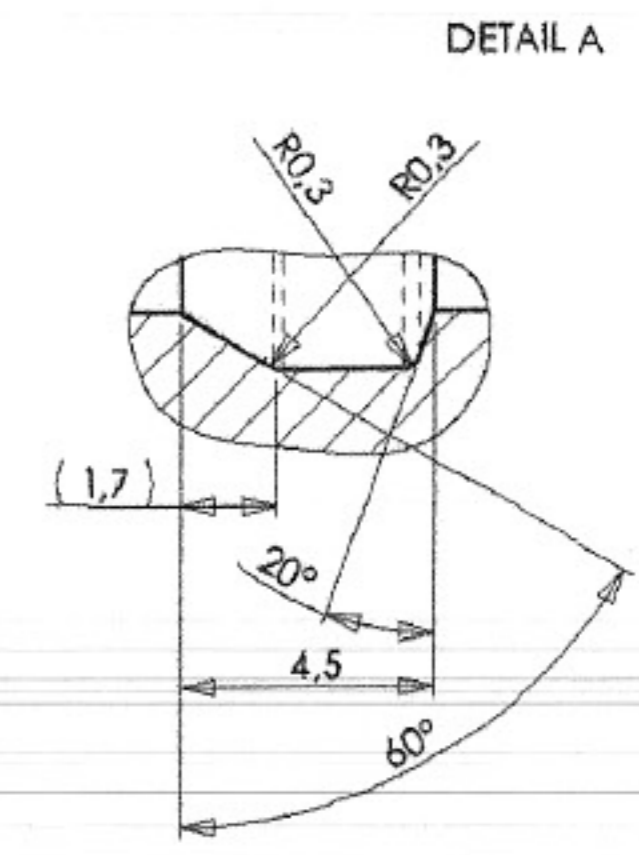
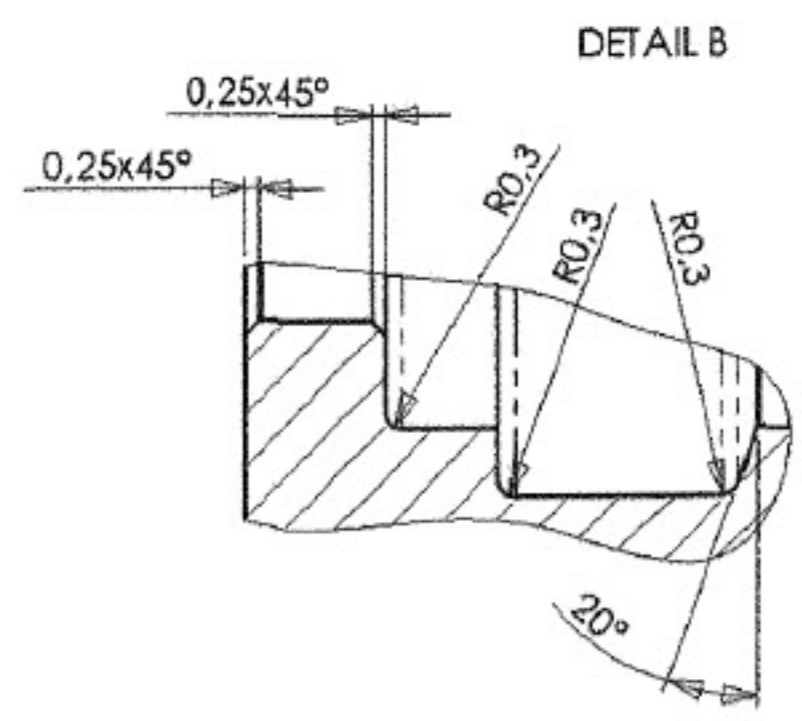
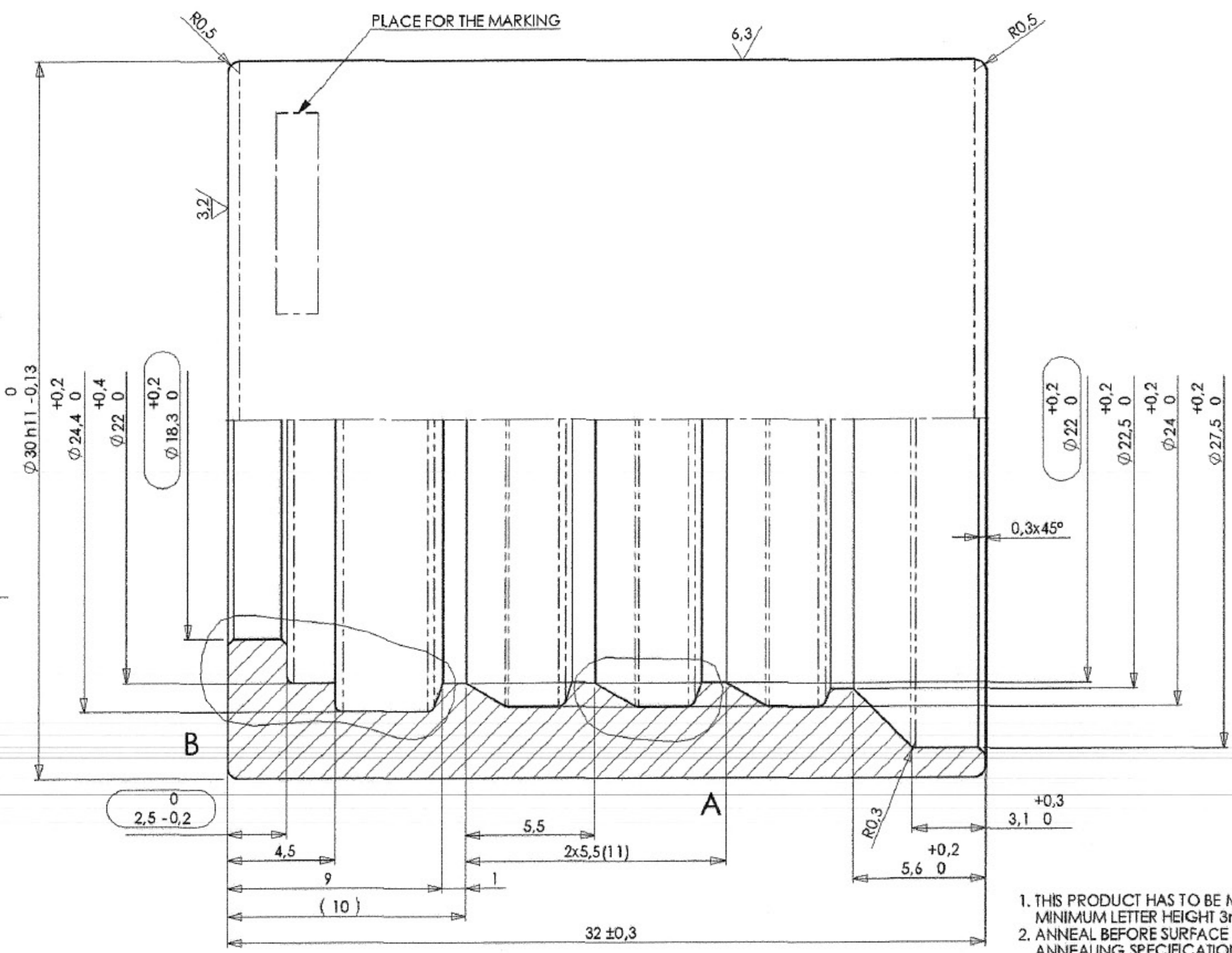
	NAME	DATE
DRAWN	Miroslav Skuta	22.8.2008
CHECKED	Ing. Pavol Durec	22.8.2008
APPROVED	Anke Baacke	22.8.2008

DWG.No
PHD 113

160.000 X

6,3 (✓)

Price now 0,33 Eur



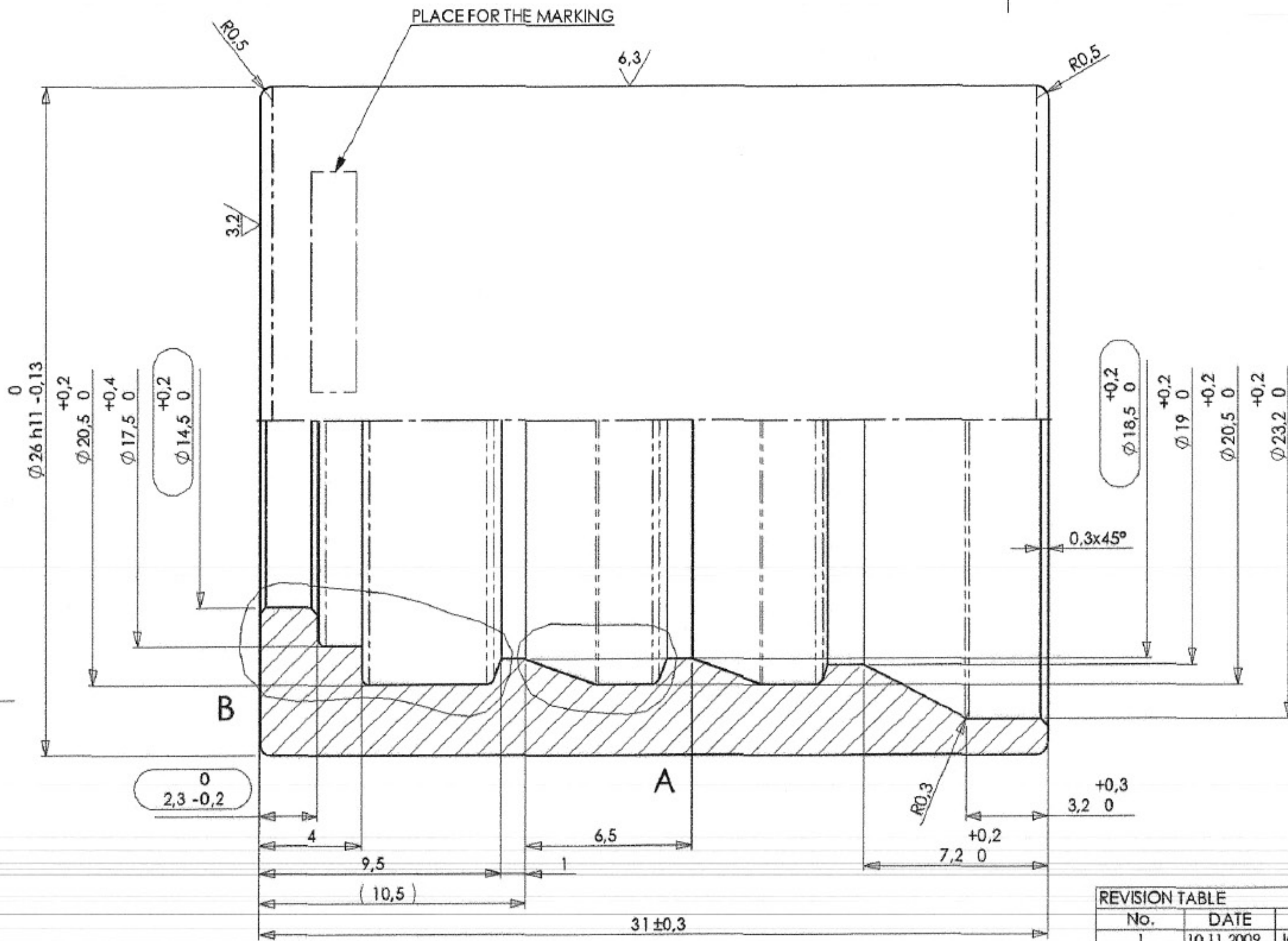
1. THIS PRODUCT HAS TO BE MARKED BY MANUFACTURER'S CODE AND PRODUCT NAME
MINIMUM LETTER HEIGHT 3mm, MAXIMUM LETTER HEIGHT 5mm.
2. ANNEAL BEFORE SURFACE PROTECTED.
ANNEALING SPECIFICATION: ANNEALING BY 850 TO 950 °C, 15 MIN. HOLD, SLOW COOLING DOWN.
VOR DER OBERFLÄCHENBEHANDLUNG BEI 850 BIS 950 °C 15 MIN. GLÜHEN; LANGSAM ABKÜHLEN LASSEN.
3. SURFACE PROTECTION ACCORDING ORDER SPECIFICATIONS. CHECK ORDER BEFORE PRODUCTION.
OBERFLÄCHENSCHUTZ WIE IN BESTELLUNG BEAUFTRAGT. VOR PRODUKTIONSSTART BESTELLTTEXT PRÜFEN.

UNLESS OTHERWISE SPECIFIED:
DIMENSIONS ARE IN MILLIMETERS
TOLERANCES: ISO 2768-mK
ALL DIMENSIONS AND TOLERANCES
ARE INCL. FINISH
DEBUR AND BREAK SHARP EDGES

	NAME	DATE
DRAWN	Miroslav Skuta	22.8.2008
CHECKED	Ing. Pavel Durec	22.8.2008
APPROVED	Anke Baacke	

No.	DATE	AUTHOR	MARK	DESCRIPTION
1	10.11.2009	Jakub Jančovič	-	Optional marking removed
			-	Inspection dimensions defined

DWG.No
PHD 213



6.3/ (✓)

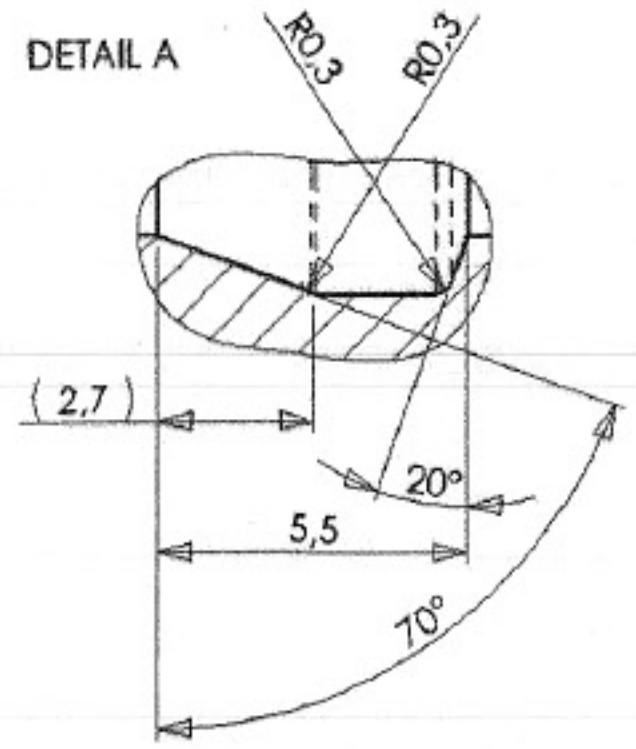
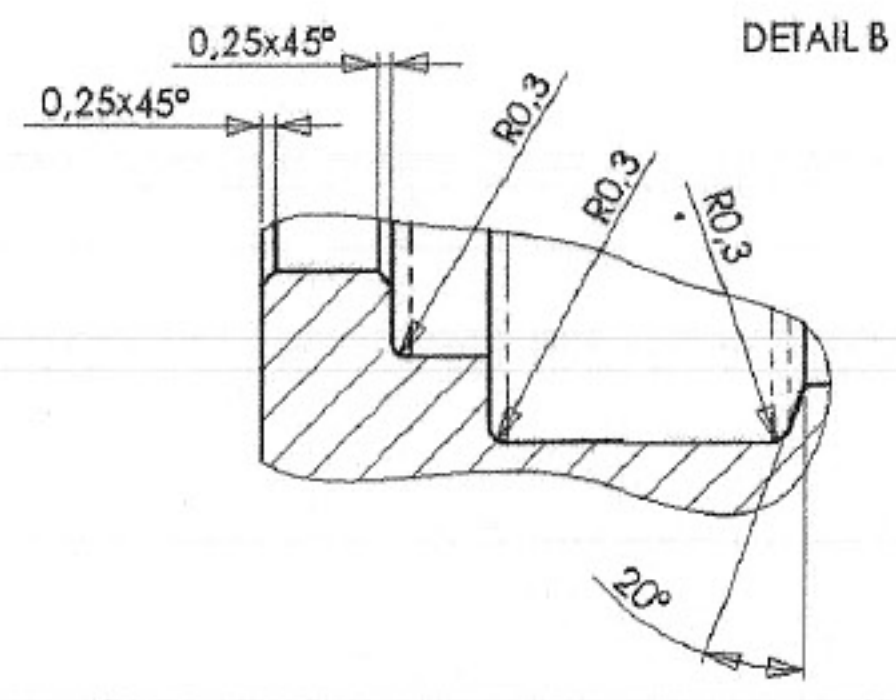
165.000

Price 0,27 Eur

REVISION TABLE

No.	DATE	AUTHOR	MARK	DESCRIPTION
1	10.11.2009	Jakub Jančovič	-	Optional marking removed
			-	Inspection dimensions defined

1. THIS PRODUCT HAS TO BE MARKED BY MANUFACTURER'S CODE AND PRODUCT NAME
MINIMUM LETTER HEIGHT 3mm, MAXIMUM LETTER HEIGHT 5mm.
2. ANNEAL BEFORE SURFACE PROTECTED.
ANNEALING SPECIFICATION: ANNEALING BY 850 TO 950 °C, 15 MIN. HOLD, SLOW COOLING DOWN.
VOR DER OBERFLÄCHENBEHANDLUNG BEI 850 BIS 950 °C 15 MIN. GLÜHEN; LANGSAM ABKÜHLEN LASSEN.
3. SURFACE PROTECTION ACCORDING ORDER SPECIFICATIONS. CHECK ORDER BEFORE PRODUCTION.
OBERFLÄCHENSCHUTZ WIE IN BESTELLUNG BEAUFTRAGT. VOR PRODUKTIONSSTART BESTELLTTEXT PRÜFEN.



UNLESS OTHERWISE SPECIFIED:
DIMENSIONS ARE IN MILLIMETERS
TOLERANCES: ISO 2768-mK
ALL DIMENSIONS AND TOLERANCES
ARE INCL. FINISH
DEBUR AND BREAK SHARP EDGES

	NAME	DATE
DRAWN	Miroslav Skuta	22.8.2008
CHECKED	Ing. Pavol Durec	22.8.2008
APPROVED	Anke Beacke	

DWG.No
PHD 210